

HONORING OUR PAST
**BUILDING
OUR
FUTURE**
A CAMPAIGN FOR
ST. THOMAS MORE PARISH





A LETTER FROM OUR LEADERSHIP

Dear Friends,

We are excited to present the **Honoring Our Past, Building Our Future** Capital Campaign! As proud members of the St. Thomas More community, we believe our environment should match the amazing spirit, faith and energy of the parish that we all call home. This campaign will help us fund a campus renovation that will accomplish that goal.

Now is the time to come together and invest in the future of St. Thomas More. Our master planning process, started three years ago, is complete. Since the beginning of the project, we have focused on four key pillars to guide the work:

Improve the experience of the community that worships, learns and serves at St. Thomas More.

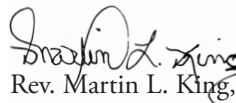
Preserve the architectural integrity of our historic Pietro Belluschi designed church.

Maintain a functional space throughout the building process to minimize disruption.


Demonstrate our Catholicity with intention and purpose in every phase of planning, design and construction.

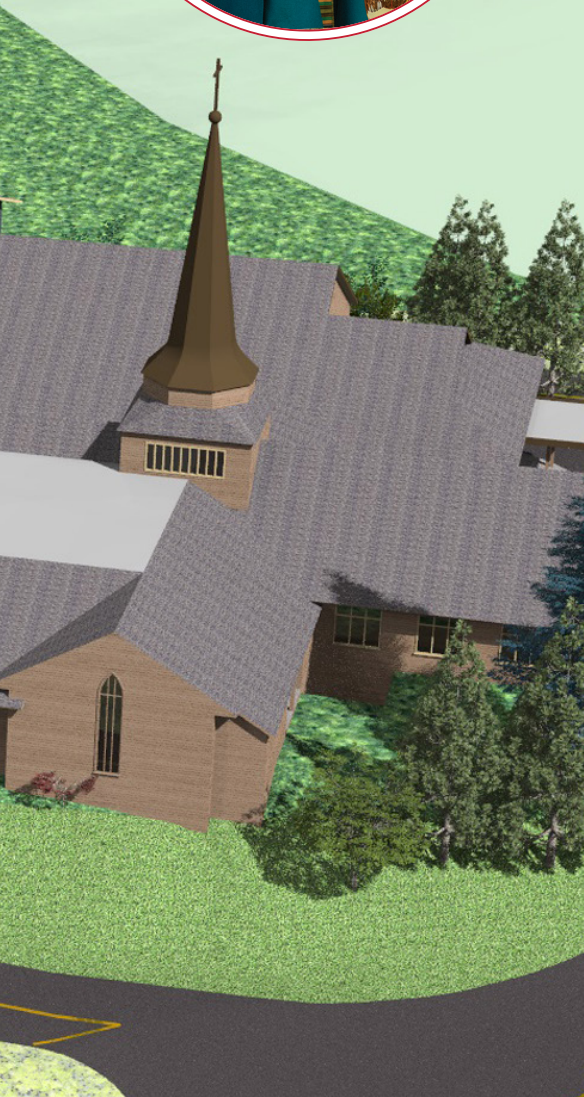
Your participation is essential as we embark on this important project. We hope you will join us and make a meaningful and significant gift to the Honoring Our Past and Building Our Future Capital Campaign. God Bless our community.

In His Spirit,

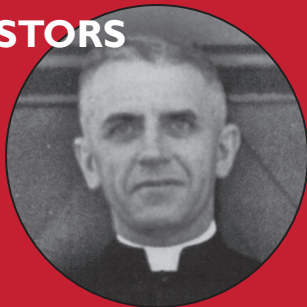

Rev. Martin L. King, Pastor


Karl Glaser,
Campaign Co-Chair


Mary Murphy,
Campaign Co-Chair



PASTORS



Rev. Francis Schaefers
1936-1960

Rev. Monsignor
Edmund Van der Zanden
1960-1964

Rev. Monsignor Martin Thielen
1964-1983

Rev. Monsignor Arthur Dernbach
1983-1997

Rev. Galdino Monteiro, SFX
1997-2000

Rev. Michael P. Johnston
2000-2009

Rev. Richard Sirianni
2009-2015

Rev. Martin L. King
2015 to present

ST. THOMAS MORE 80-YEAR HISTORY

1936: St. Thomas More Catholic Parish was Founded

Fr. Francis Schaefers blessed a little Protestant chapel used as the first St. Thomas More Church. It was located at the corner of Dosch and Patton Roads, now the lower parking lot.

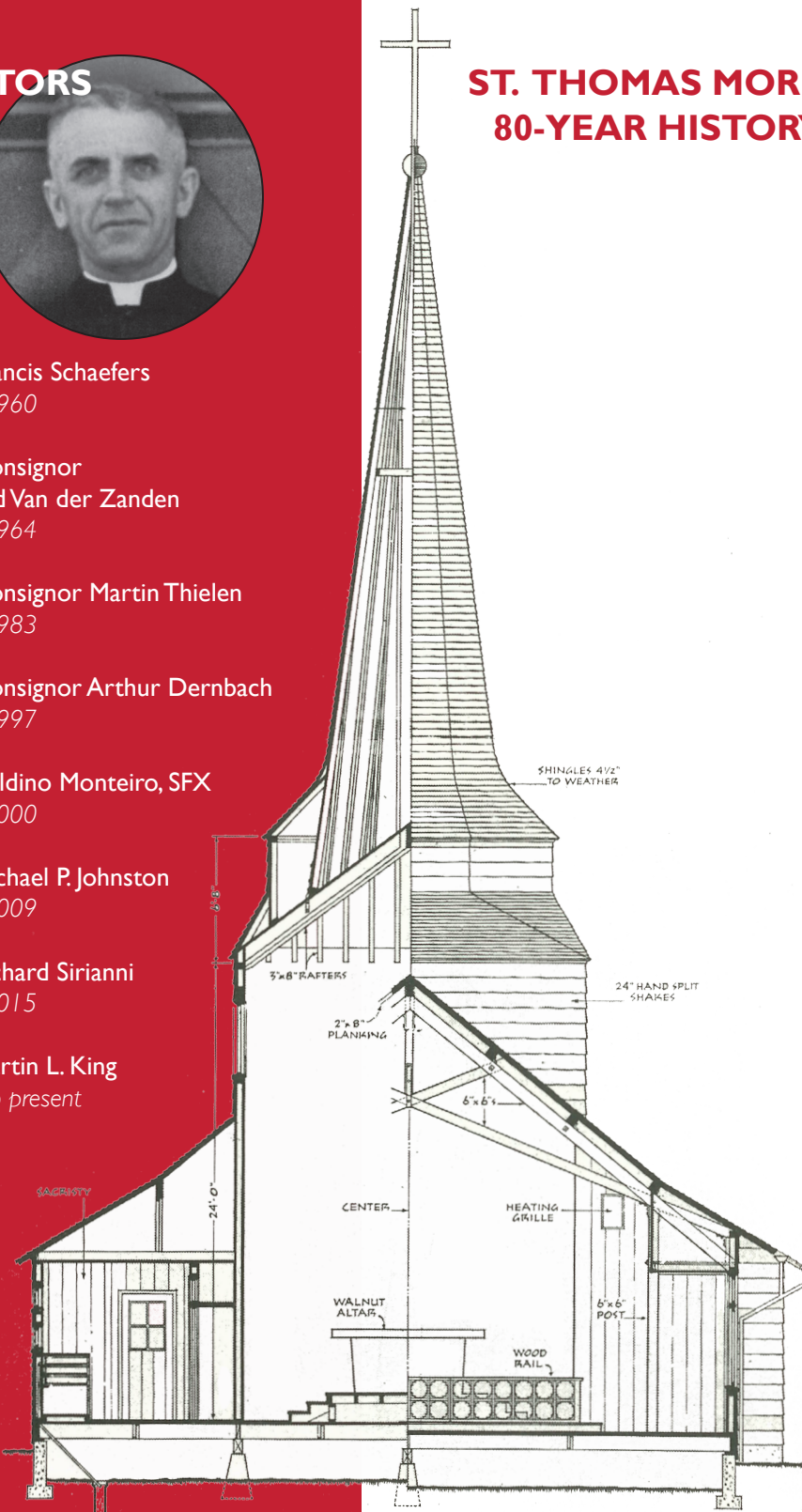
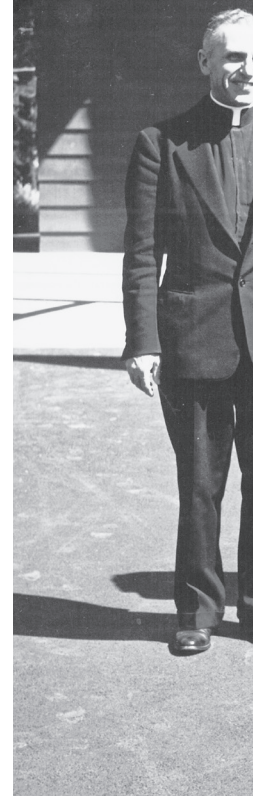
1940: St. Thomas More Church was Built

The current church was designed by world renowned architect Pietro Belluschi, a leader in the modern movement in architecture.

As Belluschi's first church design, St. Thomas More serves as a quintessential example of his Pacific Northwest Regionalism style that used local materials to combine form and function in a simple and pure way. Other notable works include: St. Mary's Cathedral in San Francisco, The Julliard School of Music in Lincoln Center, and The Portland Art Museum.

1948: School was Constructed

Construction of the school and rectory was completed in the summer of 1948. Fr. Schaefers and the Holy Names of Jesus and Mary nuns opened the school doors to 71 students in September of that year. Planning continued for future expansion.





1949-1958: Gymnasium and Additional Classrooms Completed

In 1949, fundraising began for additional classrooms, a health room, library, a music room and a gym that could be used for assemblies, socials, sports and other gatherings.

In 1952, the gym and classrooms were completed to accommodate the growing number of students and activities.

In 1958, the final two classrooms were added.

1959-Present

For nearly 60 years, the STM community has benefited from the investments of the previous generations.

We have been strong stewards of these original buildings and have respectfully maintained and re-purposed the spaces as the needs of the parish evolved.

Now it is our turn. It is time to invest in the future of St. Thomas More Church and School and create an environment that will serve our community for future generations.

“We have been a part of St. Thomas More family for over 60 years - I went to school here, my kids went to school here and now my grandkids are Bulldogs. Karen and I are proud to serve as Honorary Chairs of the campaign and hope you will join us in supporting the effort. St. Thomas More is worthy of this renovation. It has been a cornerstone of so many families for generations and we need to protect its potential for generations to come.”

KEVIN KELLY,
*Parishioner, Alumnus,
Parent & Grandparent*

“The generations before us donated to St. Thomas More so the church, school and the campus could serve our community. Now it is our turn. No more band-aids, but smart and strategic improvements now that best serve our community and beyond. I am so proud of the work that this team has done and look forward to celebrating the success of this campaign with you all.”

FR. RICHARD SIRIANNI
Former Pastor

“There is something incredibly special about the environment at St. Thomas More. My teachers and classmates encouraged me to be curious, thoughtful and courageous in and outside the classroom. The nine years I spent at STM have equipped me with the knowledge, faith and sense of self I need to be a successful individual. I am excited to hear that we are taking steps to improve our campus so that students can continue to build strong foundations in their education and faith.”

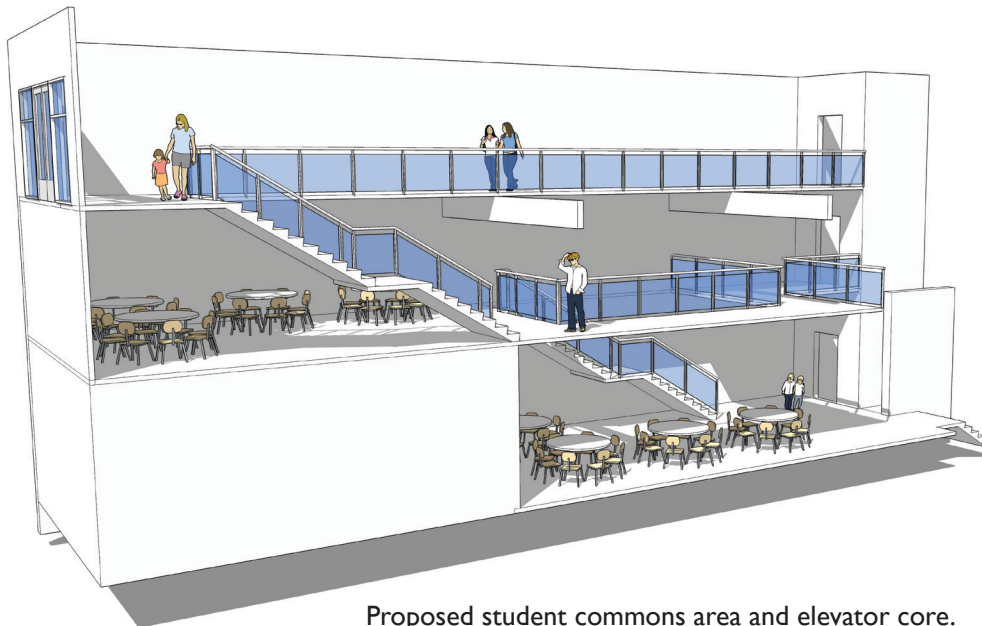
MIA BARICEVIC
STM Class of 2013

NOW IS THE TIME

For years, we have worked to maintain our aging facilities. We have now reached a point where repairing these old and outdated structures is no longer effective or responsible.

Fr. Sirianni challenged us at the 2014 School Auction to imagine a smarter, safer and more welcoming campus. With that Paddle effort, the Project LEAD team was formed. The group gathered feedback and ideas through surveys, focus groups and town hall meetings to establish building priorities and identify potential funding sources.

Thanks to a partnership with Henry Fitzgibbons and Soderstrom Architects, the master planning process has been completed. We have a 10-year roadmap of building projects that will position us for the next 100 years of ministry.



Proposed student commons area and elevator core.

CAMPUS-WIDE PLAN

Fully accessible campus

- Elevator core and commons area providing access to all campus levels
- ADA-compliant in all aspects of the new and existing facilities

New academic spaces

- New and renovated classrooms that maximize flexibility to accommodate diverse learning opportunities and collaboration
- Improved Science Lab, art studio, music room, technology/maker space, and Spanish Center



State-of-the-Art Learning Resource Center

- Traditional library resources combined with digital experiences

Parish Hall upgrades to enhance fellowship

- Increased capacity to host all-parish events and neighborhood activities
- Full commercial kitchen
- New school cafeteria
- Dedicated restrooms

Regulation-sized gymnasium

- Retractable stage for auditorium-style performances and events
- Dedicated restrooms

Dedicated Parking Facility

- Improved access to all areas of the campus

Seismic upgrades and new mechanical systems

- Environmentally sustainable

Updated landscape

- Sidewalks, curbing and plantings to enhance neighborhood appeal, partnership and safety

Enhanced Church Entry and Narthex

- Courtyard, meditative garden, and fellowship space

Projects will be prioritized and completed based on funding received. Your investment today insures that construction of essential projects can begin as soon as possible.

METHODS OF GIVING

Cash/Check/Credit Card

Securities

Appreciated stocks, bonds or mutual funds offer special tax advantages.

Real Estate

Gifts of property entitle a donor to an income tax deduction equal to the market value with no tax on any capital gain.

IRA Charitable Rollover

Taxpayers age 70½ or older can transfer up to \$100,000 annually from their IRA accounts directly to charity without recognizing the distribution as income.

Corporate Matching Gifts

A matching gift program provided through your company or board membership can increase the value of your gift as an employee, board member or even retiree.

In-Kind Donations

Do you own or have access to a company that specializes in goods or services that could be used for our project? Please call us to discuss the details.

Please contact Amy Dice, Development Director, at 503-222-6105 x125 or adice@stmpdx.org, with any questions.



Pastor

Rev. Martin L. King

School Principal

Amy Jefferis

Campaign Co-chairs

Karl Glaser

Mary Murphy

Honorary Chairs

Rev. Richard Sirianni

Paul & Megan Cameron

James Boehnlein & Mary Carr

Kevin & Karen Kelly

Mark & Debbie Madden

Michael & Donna McClaskey

Hank & Suzann Baricevic Murphy

Jon & Kathleen Niedermeyer

William & Rose Marie Reilly

Lee & Marilyn Whitaker

Campaign Cabinet

Matthew Barkley

Amy Dice

Kelly Martin

Craig Ruble

St. Thomas More Catholic Parish
3525 SW Patton Road
Portland, OR 97221
(503) 222-6105 x125
www.stmpdx.org